



Annual Report 2022

Kate Duncan Smith DAR School
The "Gem" of Gunter Mountain



Mission Statement

The mission of Kate Duncan Smith DAR School, Inc. is to provide opportunities for educational and personal growth for students, while emphasizing patriotism, responsible citizenship and the historical legacy of the school.

KDS DAR School Board of Trustees

KDS EXECUTIVE COMMITTEE

Cheryl P. Harrison, Chair, Alabama
Melvina P. Phillips, Ed.D., Vice Chair, Alabama
Athelia W. Gibbs, Secretary, Alabama
Gail W. Moore, Treasurer, Alabama
Patrice R. Donnelly, State Regent, Alabama
Tammy B. Clemons, Vice President General, Alabama
Rita P. Horton, Honorary Chair for Life, Alabama
Peggy S. Johnson, Honorary Chair for Life, Alabama
Shelby D. Ward, Parliamentarian, Alabama

ALABAMA STATE REGENT'S APPOINTEES

Janet E. Deaton, Alabama
Malinda Williams, Alabama
Janeal N. Shannon, Alabama

STATE SCHOOL CHAIR

Julea Moats, Alabama

ELECTED MEMBERS

Pamela M. Barrack, New York
Cheryl K. Baxter, Indiana
Marcy L. Carter-Lovick, Texas
Debra R. Coe, Illinois
Marguerite H. Fritsch, Pennsylvania
Betty B. Harrah, Georgia
Mindy T. Kammeyer-Price, Georgia
Adele E. Lancaster, California
Sharon L. Maas, California
Cindy F. Mangum, Mississippi
Betty D. Moore, Alabama
Laurie P. Nesbitt, Virginia
Emily D. Robinson, Tennessee
Hampton Smith, Alabama
Ricky Sutphin, Alabama
Kelly L. VanWormer, Michigan
Larry Ward, Alabama
Cindy S. Wigley, Ed.D., Alabama
Lynn F. Young, Texas

HONORARY MEMBERS

Mildred R. Byars, Alabama
Sara C. Craft, Alabama
Jean W. Vaughan, Alabama

Message from the Chair

Many exciting things took place at KDS during 2022.

Despite the continued challenges brought about by COVID, we were able to carry on the business of the school via Zoom meetings, telephone, texts, and email.

During the Awards Day and Graduation weekend in May, the landscaped area near the Administration Building and sprinkler system were dedicated to honor Peggy Johnson, Honorary Board Chair for Life, for her service to KDS. Also, during this weekend, the Louisa St. Clair Chapter of Michigan rededicated the marker that commemorated the construction of a sidewalk connecting the driveway at Lane Chapel to steps leading down from the street to the Michigan Center.



*Cheryl Harrison, Chair
KDS Board of Trustees*

We were excited the Marshall County Board of Education voted to move forward with the complete track renovation of the KDS track. The track was not constructed properly when it was built and was the wrong size. Efforts have been ongoing for 16 years to have it repaired. Many thanks to Dr. Cindy Wigley, Marshall County Superintendent, and members of the Marshall County Board of Education for seeing that this project was finally completed. A ribbon-cutting will be held in the spring.

We were sorry to learn of Beth Cagle's retirement as KDS Development Director, and we wish her the best in the future. KDS alum, Jason Hodges, is now serving as Development Director. He is doing an outstanding job of promoting KDS, not only locally, but across the country.

Students continue to excel in the areas of patriotism, academics, robotics, and sports. On Senior Awards Day, approximately \$1,153,245 in scholarships were presented to fifty-eight deserving KDS graduates. Fifty special awards were also given, totaling more than \$25,625. These awards recognized the students for not only their academic achievements, but also their service, their attitudes, and their commitment to excellence.

Dedication Day was a huge success. It was great to have President General Pamela Wright and National School Chair Dawn Lemongello with us and to have the National Executive Officers on campus. This year marked the first time we have held the famous Basked Lunch since 2019, and it was great that the local community continues to support this tradition. The dedication of Alabama "Find Your Wings" Garden was wonderful.

One of the most exciting happenings in quite some time is the KDS DAR School 100th Anniversary celebration in 2024. The 100th Anniversary Committee is working diligently on plans for events and activities that will include the DAR, alumni, the community, and of course, the students. Stay tuned, because there are some exciting things coming, and we will continue to share plans with you as they develop.

On a personal note, in May I will end my six-and-a-half years as Chair of the KDS DAR School Board of Trustees. It has truly been an honor to serve in this position. I am grateful for the support of so many people, including the Executive Committee, Board Members, Committee Members, and countless individuals. I am also grateful to the many chapters across the state and country who have supported KDS. I am especially thankful for the hard work of the Administrative Office Staff and Maintenance Staff. They have made my job easier as they always go "above and beyond". KDS DAR School will always hold a special place in my heart, and I look forward to supporting this gem of Gunter Mountain in the future.

God Bless.

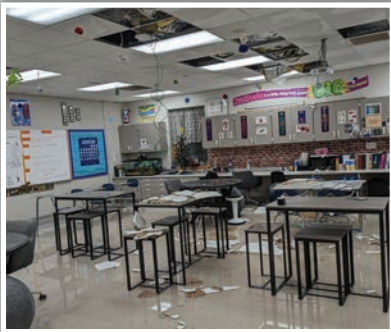
Executive Director's Message



Heather W. Green
KDS Executive Director

Growing up in the small town of Grant, I was surrounded by community-minded people who had a deep love for KDS DAR School. Recently, I've been reminded that there are still those extraordinary people in our community and surrounding areas who go above and beyond for this school and its students.

Following several days of single digit temperatures, with a low of 4.6 degrees in Grant on December 24, pipes in two areas of the Burkey Center froze and burst, spraying water from the ceiling down onto everything in the classrooms below. The biology classroom and the Family & Consumer Sciences kitchen, both located on the northeast end of the building, had significant ceiling damage and loss of electronics equipment.



KDS and Marshall County Board of Education Maintenance Staff worked overtime during the holiday break to make the necessary repairs and conduct the extensive clean-up required so that school could start on January 4th as scheduled.

But what truly warmed my heart was that on Christmas Eve at 9:45 p.m., dozens of folks showed up in work clothes with Shop Vacs and squeegees to help keep the water from entering the gym and to remove standing water from more than half of a 40,000+ square foot building. People of all ages with one thing in common, their love for KDS DAR School, gave up a bit of their holiday to help.

Another example of community-minded focus is the renovation of the KDS DAR School track, which was constructed in 2006 along with the football stadium. During construction, the base was not properly compacted, resulting in large cracks all along the track's surface. The cracking was so severe it rendered the track virtually unusable. Additionally, the track was not the proper size or dimension to be utilized in Alabama High School Athletic Association sanctioned events such as high school track meets and lacked the straight-lane extensions required for 50- and 100-yard dash events.



Thanks to the Marshall County Board of Education, the complete renovation of the KDS track began in July of 2022

and was completed early in 2023 at a cost of nearly one million dollars. So after years of not being able to host track meets, on Tuesday, April 18, KDS hosted the Marshall County Track & Field Championship which included seven teams and 237 athletes.

I am grateful to the Marshall County Board of Education; Dr. Cindy Wigley, Superintendent; and Alan Garner, Assistant Superintendent, for all their planning and persistence to make the track renovation a reality. It has been a long time in coming. And I'm so impressed with the dozens of adult volunteers who trained and became certified AHSAA officials to ensure home meets run smoothly.

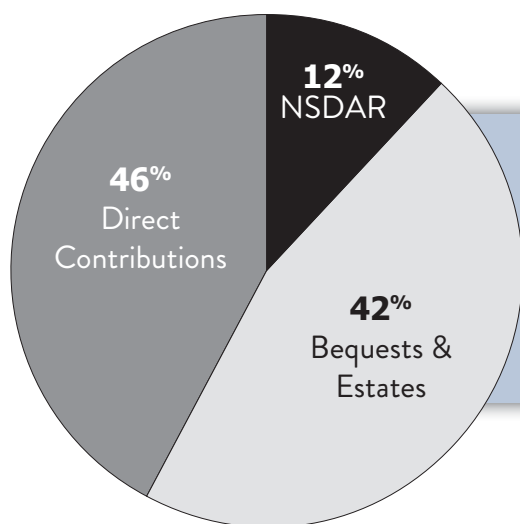
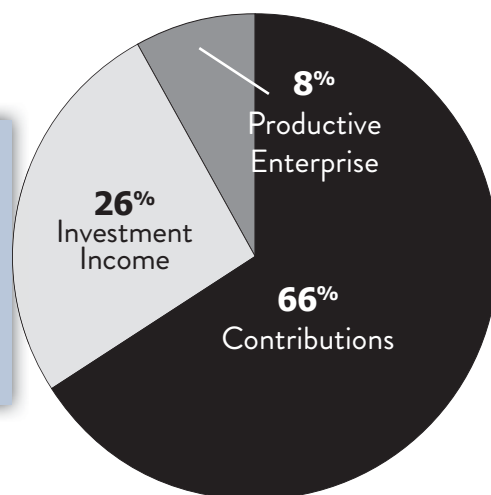
These are just two instances where our community has come together to support this school in a time of need. When I look around our campus, there are examples everywhere. And what I've known since childhood is still true today - there's just something special about KDS.

2022 Report to the Friends of KDS

Information is based on audited financials from October 1, 2021, to September 30, 2022

TOTAL INCOME

Contributions*	\$ 860,666
Investment Income	\$ 342,611
Productive Enterprise	\$ 99,294
TOTAL	\$ 1,302,571

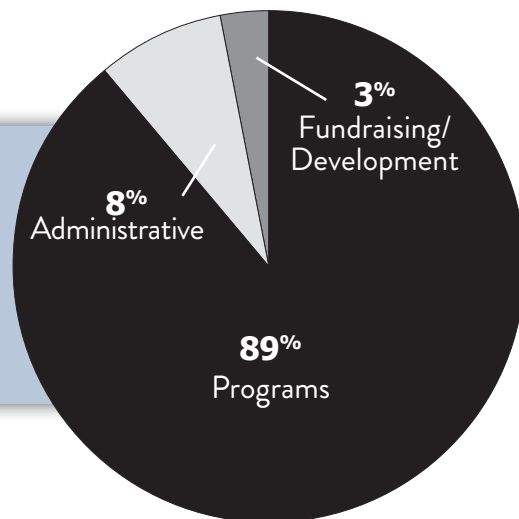


CONTRIBUTIONS BREAK-DOWN

NSDAR	\$ 105,251
Direct Contributions	\$ 398,960
Bequests & Estates	\$ 356,455
TOTAL	\$ 860,666

TOTAL EXPENSES

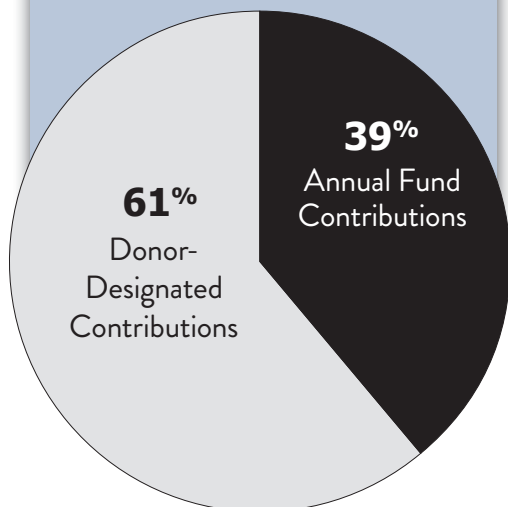
Programs	\$1,086,687
Administrative	\$ 92,089
Fundraising/Development	\$ 38,599
TOTAL	\$ 1,217,375



2022 Report to the Friends of KDS

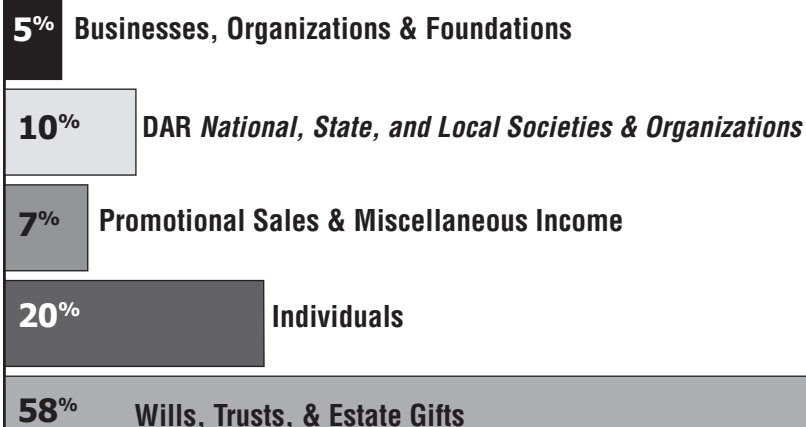
Information is based on audited financials from October 1, 2021, to September 30, 2022

INCOME CATEGORIES



WHERE OUR DONATIONS COME FROM

Percentages based on Annual Fund (Unrestricted) Contributions from October 1, 2021, to September 30, 2022



WHAT OUR DONORS SUPPORT

Percentages based on Donor-Designated (Restricted) Contributions from October 1, 2021, to September 30, 2022

Campus & Facilities	36%
Building, renovation, & construction projects	
College Scholarships & Student Awards	22%
Work Scholarship	14%
Student work program	
Classroom Needs	11%
Classroom supplies and equipment, teacher resources, & student supplies	
Student Aid	13%
Student health & personal needs, activity support & Blessings	
Bags/Patriot Pantry	
Special Projects	4%



ENROLLMENT FIGURES

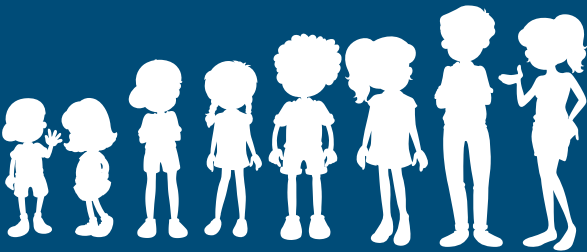
At the beginning of the 2022-2023 School Year:

Elementary School **590**
PreK – 4th grade

Middle School **358**
5th–8th grade

High School **392**
9th–12th grade

TOTAL ENROLLMENT **1,340**



2022 STUDENT STATS

103

Students receiving Assistance with Personal Needs or Healthcare Needs through the Children's Fund or Helen Pouch Memorial Fund

346

Elementary and Middle School Students receiving Blessing Bags

155

KDS Graduates attending College, Technical, or Trade School on DAR Scholarship

148

KDS Students receiving a Book through the Book Fair Bucks Program

68

Students receiving Christmas Gifts through support of the Snowflake Holiday Giving Campaign

28

Students employed through the KDS Work Scholarship Program

Continental Congress 2022

Kate Duncan Smith DAR School was honored to be part of the National Society Daughters of the American Revolution's 131st Continental Congress, held June 29th - July 3rd, in Washington, D.C. and in-person for the first time since 2019. KDS Executive Director Heather Green; Board Chair Cheryl Harrison; and six KDS student representatives enjoyed a busy week of meeting with Daughters from across the country and throughout the world to share with them the story of KDS, the "Gem of Gunter Mountain."

With restrictions surrounding the Covid-19 pandemic preventing in-person Continental Congress from taking place in 2020 and 2021, two sets of KDS students missed their opportunity to represent the school in the traditional sense. So, the members of the KDS Executive Committee decided to extend an invitation to six students – 2022 student representatives, Caitlyn O'Neal and Connor Weems, rising KDS seniors; 2021 student representatives, Lizzie Hammett and Cole Edwards, 2022 KDS graduates; and 2020 student representatives, Mikiah Munoz and Nick Hardin, 2021 KDS graduates.



Caitlyn and Connor had the privilege of speaking about KDS during the Education Luncheon on Friday, and Heather shared a brief overview of plans for the KDS 100th Anniversary celebration. KDS is one of five total DAR Approved Schools to be featured during Continental Congress.



In addition to working daily at the school's booth, the group had the pleasure of attending numerous events including Opening Night Ceremonies, the Alabama-Mississippi "Southern Sunrise" Breakfast, the Illinois Supper, the Texas Tea, the Indiana Tea, the California Tea, the Units Overseas Luncheon, the Michigan Brunch, the Pennsylvania Luncheon, the Education Luncheon, and the Junior Membership Luncheon.

Free time is always scarce during Continental Congress, but the KDS delegation did have the opportunity to visit several of our country's top attractions including the Smithsonian National Museum of Natural History, National Museum of American History, and National Gallery of Art; the Old Post Office Clock Tower; and the numerous memorials and monuments along the National Mall.



KDS DAR SCHOOL CENTENNIAL CELEBRATION

A Party 100 Years in the Making



Kate Duncan Smith DAR School will be celebrating 100 years in 2024, and the Centennial Celebration is officially underway.

KDS DAR School was opened in 1924 by the Alabama Society DAR in an effort to provide an exceptional education steeped in patriotic values for the children of a rural area of the state. The Alabama Daughters were joined in their efforts by the National Society in 1928 with the passing of a resolution urging societies at large to cooperate with the state society of Alabama in its efforts to enlarge the school and increase its usefulness.

Now, nearly 100 years later, KDS has grown and flourished in its mission to provide opportunities for educational and personal growth for students, while emphasizing patriotism, responsible citizenship, and the historical legacy of the school.

KDS has devoted a century of service and support to its students by striking a balance between progress and tradition. And on the eve of the school's 100th Anniversary, we have a once-in-a-lifetime opportunity to celebrate this milestone while leaving a gift for future generations.

The KDS DAR School Centennial Campus Commons project will focus on constructing and rejuvenating a neglected space in the heart of our historic campus, thereby enriching our student experience by providing opportunities for learning both inside and outside the classroom.



This project will unite our campus and our community by focusing on shared experience, strengthening our connection to our history, and serving as a reminder of how the past shaped us to inform our present and mold our future.

The generosity of the Daughters of the American Revolution, KDS alumni, students, faculty and staff, friends, and community is critical to our success. You can secure your part in honoring our beloved Gem of Gunter Mountain on the eve of its centennial through a number of available sponsorship opportunities.

Please follow Kate Duncan Smith DAR School on Facebook and Instagram or visit www.kdsdar.org for updates on the plans. You can also support these efforts by purchasing official 100th Anniversary logo items, pins, and apparel through our online store.



To secure your sponsorship, contact KDS Development Director Jason Hodges at 256-728-4236 or jhodges@nehp.net

KDS DAR SCHOOL 100th ANNIVERSARY PROJECT SPONSORSHIP LEVELS

Blue Level: Centennial Plaza \$25,000

Showcased on the Permanent Project Recognition Plaque, on the Project Banner, during the Ground-Breaking Photo Opportunity, during the Project Dedication Ribbon-Cutting, on the Digital Donor Display, on the Website, in the Annual Report

Red Level: Terrace & Trees \$15,000

Featured on the Permanent Project Recognition Plaque, on the Project Banner, during the Project Dedication Ribbon-Cutting, on the Digital Donor Display, on the Website, in the Annual Report

Gold Level: Campus Green & Pathway \$10,000

Highlighted on the Permanent Project Recognition Plaque, on the Project Banner, on the Digital Donor Display, on the Website, in the Annual Report

Green Level: Landscaping \$5,000

Presented on the Permanent Project Recognition Plaque, on the Digital Donor Display, on the Website, in the Annual Report

Silver Level: Flagstone Walkways \$1,000

Listed on the Permanent Project Recognition Plaque, on the Digital Donor Display, on the Website, in the Annual Report

Patrons \$500

Included on the Permanent Project Recognition Plaque, on the Digital Donor Display, on the Website, in the Annual Report

KDS DAR SCHOOL

Gem Sustained Giving Society

Members of the Gem Sustained Giving Society demonstrate an ongoing commitment to the needs of KDS and its students by making a modest donation each month, creating a consistent and reliable source of income that allows the school to plan ahead and address critical needs before they arise. This exclusive group of supporters provides a steady source of income for the Annual Giving Fund and the most important resource of all – the more than 1,300 children who have the privilege of attending KDS DAR School.

There are a number of benefits to members of the Gem Sustained Giving Society:

- Joining is easy and convenient. Simply complete the form, and return it to KDS.
- Makes setting and achieving a donation goal easy. Your annual giving goal can be broken out over 12 months, taking the guesswork out of when and how much to give.
- The program is flexible. You choose the annual donation amount, and you decide when and how you want the contribution to be made. And, of course, you may change your preferences at any time.
- It's safe. Your contribution will be made via secure electronic funds transfer from your checking account.
- Contributions made through the Gem Sustained Giving Society qualify to receive the same recognition as other Annual Giving Fund donations.
- Members of the Gem Sustained Giving Society will receive a unique and beautiful recognition pin and a new gem charm at the conclusion of each year of continuous annual pledge fulfillment.

For information on how you can become a member of the KDS Gem Sustained Giving Society, contact Jason Hodges at 256-728-4236 or jhodges@nehp.net.



Gem Sustained Society Members **AS OF FEBRUARY 11, 2022**

Sue Ellen Adams
Jodi Adamson
Susan Lynn Allen
Elizabeth Baker
Elizabeth A. Battles
Sandra G. Beaver
Cindy J. Bell
Claire B. Bennett
Mary S. Bennett
Nancy C. Billings
Anne Blackburn
Judy Blackwell
Sonya Boydston
Patricia Bradford
Helen W. Brown
Edith H. Brunia
Sally E. Buckingham
Lethe C. Burns
Susan L. Burroughs
Beth Cagle
Veronica W. Carter
Shenandoah Chefalo
Kathy Clements
Tammy B. Clemons
Sara C. Craft
Cricket C. Crigler
Wanda H. Day
Terri L. Dean
Janet Ewing Deaton
Sharon J. Devine
Cheryl DeVine-Holick
Patrice R. Donnelly
Diane S. Doty
Tad R. Douglas
Jo Anne Farrell
Lynnette R. Faulkner
Michelle Feehan
Patricia J. Ferguson
Kristy Fuell
Jessica Gautney
Athelia W. Gibbs
Heather W. Green
Mary Bess Green
Gunter Mountain Chapter, NSDAR
Jane Lee Hamman

Ann E. Harder
Cheryl P. Harrison
Natalie Haughawout
Judith Hine
Janette M. Hole
Geni S. Holmes
Susan H. Holt
Mona Crandell Hook
Lanabeth L. Horgen
Rita P. Horton
Pegi K. Ivancevich
Carol O. Jackson
Janice A. Jennings
Barbara J. Johnson
Kimberly M. Johnson
Peggy S. Johnson
Mindy Kammeyer-Price
Karol Kapustka
Susie Keller
Joyce M. Kenamer
Lynn Kohler-Glowatz
Suzy Koski
Debbie Kyle
Adele E. Lancaster
Suzanne Landry
Lisa Lents
Mary Lewey
Clariece B. Lilly
Sharon L. Maas
Jessica F. Maddox
Wendy Markey
Deborah A. Marsh
Bronwen Maxwell
Lynn Carol McCollum
Mary Jane McGuire
Patricia Miller
Randi D. Minor
Karen J. Montgomery
Betty D. Moore
Gail W. Moore
Helen C. Moore
Mary R. Mullins
Rebecca Ann Mullins
Laura Lee Nichols
Mari R. Noorai

LaDania E. Norton
Katherine J. Nye
Paula H. Osborne
Charlene M. Pace
Laurie Padgett
Anne H. Parramore
Melanie R. Pepper
Josh Perkins
Melvina P. Phillips
Stacy Poe
Hellen Hicks Polk
Susan Powers-Horn
Deloris S. Quattlebaum
Kathleen K. Quickstad
Sandra A. Rackard
Laurie Ramos
Frances G. Rankin
Rita H. Reid
Constance Rifkind
Sandra M. Robertson
Rebecca M. Rostron
Gail Sawyer
Elizabeth Schafer
Pamela Scheet
Jessie C. Schniper
Carol P. Schwenk
Peggy King Scully
Janeal N. Shannon
Jean E. Sims
Amy Smart
Sherry M. Spurlin
Lynne Stallcop
Frances Stewart
Martha Ann Story
Linda P. Sullivan
Marla L. Suter
Cynthia B. Sweeney
Marilyn Tucker
Kathy B. Wallace
Betty H. Weir
Rebecca M. West
Susie G. Wuest
Ann M. Yamrus
Mary R. Yarbrough
Michele Yarbrough

Alumni Spotlight

LAUREN BREWER, KDS CLASS OF 2019

Lauren Mckenzie Wilbanks Brewer graduated from KDS DAR High School in 2019. But while most graduates were planning to attend college, trade school, or the workforce, Lauren was making plans to expand her burgeoning jewelry empire.

In 2017, when she was just 16 and a junior in high school, Lauren started her jewelry business, Lauren Kenzie. She said, "I have always loved fashion, and I decided to turn my love for jewelry into a job I could enjoy doing every day."

Lauren's education at KDS helped to prepare to run a business. She said, "The Lakeside program at KDS helped me grow in my career much sooner than expected. It allowed me to receive my education from home while working my full-time job."

In 2019, Lauren competed with other successful businesses throughout the state as part of the Alabama Launchpad competition. Alabama Launchpad is an early-stage seed fund investor, driving innovation and job growth through startup competitions and ongoing mentoring for Alabama entrepreneurs. Lauren won first place and \$50,000 to expand her small business into the multi-state operation it is today.

Lauren worked out of her bedroom for several years until, in 2020, she and her husband, Andrew, opened a warehouse in her hometown of Grant. That same year, the couple joined AmericasMart Atlanta to further expand their wholesale business. Currently, Lauren Kenzie has more than 600 retailers worldwide, two warehouses in the U.S., a dozen full-time employees, and plans for even more expansion. And on March 26 of 2023, Lauren opened her first retail storefront at Stovehouse in Huntsville, Ala.

"Some of my fondest memories at KDS are from my time in the art program. I believe art is what made my career. I enjoyed how creative the class was, and the instructor, Mrs. Edmonds, was phenomenal," Lauren said. "I was also influenced by my instructor, Dr. Finley. He did an amazing job with the Lakeside program, and I encourage any students who want to focus on a career in high school to consider this program at KDS."



In her spare time, Lauren enjoys attending church and spending time with friends and family. Her father, Brian Wilbanks, graduated from KDS in 1991; her mom, Jamie Wilbanks, graduated from KDS in 1994; and her brother, Peyton Wilbanks, is a member of the KDS Class of 2016.

The keys to Lauren's success have been her meticulous attention to detail, her husband's support, their loyal, hard-working employees, and her unique brand of jewelry that carries a lifetime warranty. Lauren loves her work. "I get to make my own schedule and be my own boss. I also get to offer job opportunities to many other women and create a positive work environment. And I get to travel often, which is very fun."

KDS CELEBRATES 98TH DEDICATION DAY

Beautiful fall weather greeted the more than 250 DAR guests who visited KDS DAR School on September 29 and 30, 2022 for its 98th Dedication Day celebration. It was wonderful to host National Society DAR President General Pamela R. Wright, National School Chair Dawn Lemongello, Honorary President General Lynn F. Young, Alabama Society DAR State Regent Patrice R. Donnelly, the NSDAR National Executive Officers, and DAR members and guests from across the country as we all shared in this very special occasion.

Awaiting the ladies as they arrived on Thursday morning was a warm “welcome to campus” where students lined the sidewalks, waved signs, and presented them with flowers and artwork while the KDS Marching Band and cheerleaders provided lively tunes and cheers. Entertainment during lunch was provided by the 6th Grade J.A.C. Club, performing a program in commemoration of the 200th Anniversary of the Santa Fe Trail.



Thursday's activities consisted of meetings of the Board of Trustees and KDS Committees. Additionally, guests were encouraged to take part in a tour of campus, visit classrooms, and read to elementary students. On Thursday evening the group enjoyed a casual dinner at Top O' the River in Guntersville.

The traditional Dedication Program on Friday is always the highlight of the festivities, and this year was no exception with 23 state societies, groups, and organizations qualifying to dedicate. The President General presented the Dedication Day message during which she shared a brief history of the DAR's commitment to education and the DAR Schools and how her administration will continue the organization's mission of supporting and promoting education. The program also featured musical performances by the Fourth Grade Choir and the High School Choir and all KDS students singing “DAR, Oh How We Love You” to a rousing response. There was even a special performance by the adorable KDS first graders who sang “My Flag”. The program was followed by the famous Basket Luncheon, which had not been held since 2019.

On Friday afternoon there was a special dedication ceremony for the Alabama Society DAR “Find Your Wings” Garden. This small agriculture project, sponsored as part of Patrice Donnelly's State Regent's Project, allows students to have a hands-on learning opportunity that teaches them responsibility and hard work as they tend the soil, plant the seeds, nurture the growth, and reap the harvest. In addition, students will learn marketing and sales skills as they sell their produce to the lunchroom and to the community.



Everyone was so pleased to see Honorary Vice President General Yvonne Boone during Dedication Day. She was a devoted supporter of KDS DAR School and a friend and mentor to many including President General Pamela Wright. Sadly, this was Mrs. Boone's last DAR event as she passed away in January of 2023 at the age of 100. She will be missed.



The 98th KDS DAR School Dedication Day was a truly special time for our “Gem” of Gunter Mountain.



We ask you to consider supporting the Steadfast, Loyal, Ever True campaign to help KDS remain:

- Steadfast to our mission of instilling in children a sense of patriotism and an understanding of American ideals through the teaching of our nation's history, promotion of responsible citizenship, and participation in DAR contests and programs
- Loyal to the day-to-day maintenance and upkeep of a picturesque 240-acre campus and 40 buildings, including the cost of insurance and utilities
- Ever True to perpetuating our unique history and traditions and bolstering heritage and community education initiatives designed to strengthen our connection with our roots

Through generous donations made last year, we completed critical repairs to the chimney on the Pennsylvania Log Cabin; began scanning student transcripts and other irreplaceable historical records; repaired the canopy covering the main entrance of the Middle School; repaired and replaced heating and cooling units; repaired roof leaks in various buildings; paid for fire alarm service and monitoring; completed inspections for fire extinguishers; repaired the cupola marking the entrance to our central campus; provided maintenance for lawn mowers, tractors, and other vehicles; paid for pest control inspections and service for 40 buildings; and so much more.

We could not have done any of this without donor support. The Steadfast, Loyal, Ever True Annual Fund campaign addresses those areas of greatest need, including the school's essential day-to-day operations, and can only be achieved through the financial support of friends.

Please join us in ensuring this important work continues by becoming a Steadfast, Loyal, Ever True partner by making a secure donation online at www.kdsdar.org/donate.

The need is great, but with your generosity, you make it possible for KDS DAR School to provide a solid foundation for students and to preserve the very special school we all love.

2022 Annual Fund Donors

Andrew Carruthers
Chapter, NSDAR
Cindy J. Bell
Bienville Chapter, NSDAR

Sue Ellen Adams
 Ann Simpson Davis
 Chapter, NSDAR
 Kathryn W. Bailey
 Elizabeth Baker
 Elizabeth A. Battles
 Rene Bishop
 Anne Blackburn
 Sonya Boydston
 Patricia Bradford
 Jane A. Bramall
 Jean K. Brewer
 Dianne Breyfogle
 Sally E. Buckingham
 Denise K. Bullock
 Susan L. Burroughs
 Doris Edwards Bush
 Caladesi Chapter, NSDAR
 Captain William Bibb
 Chapter, NSDAR
 Kathy Clements
 Colonel Thomas Hughart
 Chapter, NSDAR
 Conejo Valley Chapter,
 NSDAR
 Daniel Chapman Chapter,
 NSDAR
 Vickie Dawson
 Wanda H. Day
 Terri L. Dean
 Carolyn C. Duckworth
 Janet Evans
 Barbara Extejt
 Nancy S. Folk
 Fort Bowyer Chapter,
 NSDAR
 Fort Mims Chapter,
 NSDAR
 Susan R. Foster
 Elizabeth Steward Garner
 General Jethro Sumner
 Chapter, NSDAR
 Ginger Gidden-Weinzierl
 Heather W. Green

Saralee C. Green
Jane Lee Hamman
Betty Brown Harrah
Melba Iris Harris
Hic-A-Sha-Ba-Ha Chapter,
NSDAR
Hollywood Chapter,
NSDAR
Susan H. Holt
Jerry Honeycutt
Virginia F. Houston
Mary Jo Howard
Illinois State Organiza-
tion, NSDAR
John Nolen Chapter,
NSDAR
Cynthia Johnson-Sakuma
Josefa Higuera Livermore
Chapter, NSDAR
Mindy T. Kammeyer-Price
Susie Keller
Joyce M. Kennamer
Debbie Kyle
Gina M. LaCroix
Suzanne Landry
Leonard and Jean
Ledbetter
Linares Chapter, NSDAR
Louisa Court House
Chapter, NSDAR
William R. Lucas
Lucretia Shaw Chapter,
NSDAR
Wendy Markey
Randi D. Minor
Missouri State Society,
NSDAR
Doris Moore
Rebecca Ann Mullins
Laura Lee Nichols
Mari R. Noorai
Ocoee Chapter, NSDAR
Donna L. Owens
Anne H. Parramore
Melvina P. Phillips
Piney Creek Chapter,
NSDAR
Kathy Plexico

Susan Lynn Allen
Anan Harmon Chapter,
NSDAR
Andrew Bogle Chapter,
NSDAR
Kathryn Asay
Ann M. Bandgren
Baron DeKalb Chapter,
NSDAR
Sandra G. Beaver
Claire Breithaupt Bennett
Mary S. Bennett
Berea-Laurel Ridges
Chapter, NSDAR
Judy Blackwell

Bobashela Chapter,
 NSDAR
 John and Patricia Bourne
 Lynn A. Bowers
 Brigadier General Richard
 Winn Chapter, NSDAR
 Helen W. Brown
 Myra H. Bryant
 Warren B. Cain
 Elizabeth A. Campbell
 Marcy Carter-Lovick
 Alice Caskey
 Chancellor Wythe
 Chapter, NSDAR
 Chatsworth Chapter,
 NSDAR
 Shenandoah Chevalo
 Chickamauga Chapter,
 NSDAR
 Chief Colbert Chapter,
 NSDAR
 Lennie Dennis Cisco
 Nancy Coleman
 Bill and Peggy Collins
 Commodore John Barry
 Chapter, NSDAR
 Sara C. Craft
 Sheila Crumrine
 Carolyn J. Davis
 Harold DeArmond
 Cheryl DeVine-Holick
 Patrice R. Donnelly
 Tad R. Douglas
 Gordon Dutile
 Elijah Pugh Chapter,
 NSDAR
 Wilsonia W. Esteve
 Eunice Sterling Chapter,
 NSDAR
 Everardus Bogardus
 Society, C.A.R.
 Patricia J. Ferguson
 Jon and Diana S. Finley
 Fort Cooper Chapter,
 NSDAR
 Fort Industry Chapter,
 NSDAR

Francis Hopkinson
Chapter, NSDAR
Franklin County Chapter,
NSDAR
Patricia N. Freeman
Arlene Froelich
Jessica Gautney
General Richard Butler
Chapter, NSDAR
Jennifer Gerken
Athelia W. Gibbs
Great Valley Chapter,
NSDAR
Mary Bess Green
Nina Green
Gayle Hammonds
Ann E. Harder
Natalie Haughawout
Patricia Hein
Mary M. Helfrich
Judith Hine
Mona Crandell Hook
Teresa S. Hunter
Pegi K. Ivancevich
Carol O. Jackson
Ron and Donna Jackson
Jacob Ferree Chapter,
NSDAR
Janice Ausbrooks
Jennings
Kimberly M. Johnson
Mary Morrow Jones
Joseph McDowell
Chapter, NSDAR
Joseph Montfort Chapter,
NSDAR
Josiah Brunson Chapter,
NSDAR
Karol Kapustka
Paulette Kelly
Maureen Kennedy
Ketewamoke Chapter,
NSDAR
Charles and Charlotte
Kirkland
Lynn Kohler-Glowatz
Suzy Koski
Elizabeth Kreul

Morgan M. Lake
Glenna S. Lancaster
Rex Ledbetter
Mary Lewey
Light Horse Harry Lee
Chapter, NSDAR
Clariece B. Lilly
Marilyn (Dianne) Lollar
Linda Alcott Maples
Deborah A. Marsh
Ann F. Martin
Jacob and Katie Maynard
Lynn Carol McCollum
Mary Jane McGuire
Jeanie B. McNees
Donna McWhirter
Patricia Miller
Cletis Millsap
Gail W. Moore
Brooks A. Morton
Allyson Moyer
Mary R. Mullins
Marjorie Musil
Nancy Anderson Chapter,
NSDAR
Natchez Trace Chapter,
NSDAR
North Riding Chapter,
NSDAR
Ellen and Bill O'Brien
Old Kings Highway
Chapter, NSDAR
Charlene M. Pace
Nelle W. Pallme
Paula Pendergrass
Melanie R. Pepper
Mary Pewitt
Kelley B. Poydence
Deloris S. Quattlebaum
Kathleen K. Quickstad
Sandra A. Rackard
Laurie Ramos
Frances G. Rankin
Sarah Rao
Emily D. Robinson
Linda Roxberg
Anne Irvine Savo
Agnes O. Scherer

Jessie C. Schniper
 Roberta "Bobbie"
 Schofield
 Pamela Schweitzer
 Terry and Angela Scott
 Peggy King Scully
 Shadrack Rogers Chapter
 NSDAR
 Barb Shurtz
 Charles D. Smith
 Cilia Smith
 Isabelle Smith
 Patti B. Smith
 Barbara J. Snow
 Joan Sondergaard
 Cheryl L. Stapler
 Lynn H. Stein
 Stephen Watts Kearny
 Chapter, NSDAR
 Frances Stewart
 Linda P. Sullivan
 Tennessee Chapter, NSDAR
 Martha Heflin Terry
 Thankful Hubbard
 Chapter, NSDAR
 Maureen M. Tipton
 Tomochichi Chapter,
 NSDAR
 Tristan De Luna Chapter,
 NSDAR
 Helen Tucker
 Tucumcari Chapter,
 NSDAR
 Erin and Aidan Wallace
 Brenda F. Walls
 Bianca Warner
 Preston Whitaker
 Camille T. Wise
 Susie G. Wuest
 Michele Yarbrough
 Lynn F. Young

Jodi Adamson
Michelle Arnold
Ashmead Chapter,
NSDAR
Clara Baker Baldwin

Ann C. Barnes
Betty Martin Chapter,
NSDAR
Birmingham Territory
Chapter, NSDAR
Dawn Brady
Deborah Braswell
Carrie Ann Bright
Brunswick Town Chapter,
NSDAR
Marynell Bryant
Carol Bryant-Martin
Lethe C. Burns
Cahawba Chapter,
NSDAR
Sandy Campbell
Captain John McAdams
Chapter, NSDAR
Denise W. Carson
Chief Tuskalooza Chapter,
NSDAR
Chuquatonchee Chapter,
NSDAR
Robert and Linda Click
Commodore Preble
Chapter, NSDAR
Sharon J. Devine
Diane S. Doty
El Portal Chapter, NSDAR
Carol W. Elliott
Mary Ann Ensminger
Jo Anne Farrell
Michelle Feehan
Fernanda Maria Chapter,
NSDAR
Donna Geno
Barbara Goddard
Golden Wheel Club
Beth Gorey
Green Mountain Chapter,
NSDAR
Connie H. Grund
Hannah Lee Chapter,
NSDAR
Janette M. Hole
Geni S. Holmes
Jeanette S. Hursman

James Gilliam Chapter,
NSDAR
Elizabeth Wright Jarmon
Jean Bessac Chapter,
NSDAR
Jean Marie Cardinell
Chapter, NSDAR
John Greenleaf Whittier
Chapter, NSDAR
Barbara J. Johnson
Rebecca G. Kline
Sarah L. Larson
Linda L. Maier
Major James Kerr
Chapter, NSDAR
Sheril L. Mancino
Elizabeth Manzi
Lael Marlow
Jerry L. Martin
Mary Butler Chapter,
NSDAR
Vivian G. Mason
Mason City Chapter,
NSDAR
Dannny and Carolyn May
Joella G. McManus
Sally Michaud
Andrea M. Moss
Mount Rosa Chapter,
NSDAR
Elizabeth H. O'Brien
Oglethorpe Chapter,
NSDAR
Judi Oglio
Peace River Chapter,
NSDAR

Nicole Pendergrass
Patricia Ponds
Brenda C. Powell
Helen R. Powell
Kathy Rains
Ralph Ripley Chapter,
NSDAR
Rita H. Reid
Charlotte S. Reynolds
Johnny and Patsy Rice
Robert Rankin Chapter,
NSDAR
Mary E. Robertson
Rufus Fairbanks Chapter,
NSDAR
Sarah Treat Prudden
Chapter, NSDAR
Elizabeth Schafer
Donita Schorr
Gergeant Newton
Chapter, NSDAR
Ruth N. Sherrell
Amy Smart
Doris T. Sparks
Linda Stamatoff
Stanley Redmond Harper
Chapter, NSDAR
James and Teraca
Sutphin
Marilyn Tucker
Priscilla E. Tyson
Wermont State Society,
NSDAR
Washington State
Society, NSDAR
Elizabeth A. Watkins
Mary R. Yarbrough



PLANNED GIVING AT KDS

Support the future of Kate Duncan Smith DAR School by including us in your long-term estate and financial plans. A planned gift can provide significant benefits to the donor and ensures KDS will continue to provide opportunities for educational and personal growth for students, while emphasizing patriotism, responsible citizenship, and the historical legacy of the school.

Simply put, a planned gift is a contribution that is arranged in the present and allocated at a future date. There are a number of Planned Giving Options available. These options can be executed during a donor's life or through their estate plans.

Lifetime Gifts

- Make a recurring gift to KDS through a payroll deduction or automatic bank draft
- Make a gift of appreciated stock to KDS
- Make a gift of real estate to KDS
- Designate KDS to receive a Required Minimum Distribution (RMD)

Legacy Gifts

- Leave KDS a bequest of a specific dollar amount or a percentage of your estate
- Name KDS as the remainder beneficiary of your estate
- Name KDS as a beneficiary of a life insurance policy or Individual Retirement Account

To learn about the possible tax benefits of making a planned gift, contact your financial advisor or attorney. Visit www.kdsdar.org/planned-giving to view and download sample bequest language.

Your legacy gift also qualifies you for membership in the KDS Legacy Giving Society, a recognition club established to honor those individuals who choose to support the school through an estate gift.

For more information about the KDS Legacy Giving Society and how your planned gift can leave a lasting legacy for KDS DAR School and its students, contact Executive Director Heather Green at hgreen@nehp.net or 256-728-4236.

Legacy Giving Society Members

Andrea "Missy" Belrose

Beth Cagle

Sara C. Craft

Bernadine R. Faulkner

Heather W. Green

Rita P. Horton

Peggy S. Johnson

Mindy T. Kammeyer-Price

Billy Joe Kennamer

Clariece B. Lilly

Ann M. Yamrus

If you have designated a planned gift in your Will to KDS and would like to be listed as a member of the Legacy Giving Society, contact Heather Green.

2022 DONOR RECOGNITION

January 1, 2022 through December 31, 2022

For more than 99 years, the Kate Duncan Smith DAR School has been an educational institution that celebrates its history, fosters patriotic ideals and promotes God, Home and Country. KDS continues to benefit from the generosity of the Daughters of the American Revolution, the Children of the American Revolution, alumni, and friends. Because of you, we are able to ensure our students' opportunities for success are not hindered by personal or financial barriers. YOU are part of something very special here, and we cannot thank you enough!

Gifts of \$50,000 and more

National Society Daughters of the American Revolution
Ella M. Grimes Charitable Trust, **Washington**

Gifts of \$25,000 to \$49,999.99

Junior Membership Committee, NSDAR
DAR of **Michigan**

Gifts of \$10,000 to \$24,999.99

Alabama Society, NSDAR
Colsa Corporation - Frank Collazo, AL
Sara C. Craft, AL
Thomas and Susan Griffith, AL
Peggy S. Johnson, AL
Jane Morrow Mann, **Hawaii** *
Trust of Mable Slagle, **Pennsylvania**

Gifts of \$3,000 to \$9,999.99

Community Foundation of Greater Birmingham -
James D. and Jo T. Davis, **Alabama**
Faulkner Family Foundation, AL
Rebecca Hollingsworth, AL
Rita P. Horton, AL
Tommy and Patty Sipes, AL
Ellen and Gertrude B. Kirby Fund of the Community
Foundation of Broward, **Florida**
Lynnette R. Faulkner, FL
Ginger A. Poffenberger, FL
Georgia State Society, NSDAR
Rebecca M. Rostron, GA
Margaret H. Steward, **Michigan**
Cynthia Cleveland McNamara, **Mississippi**
Pamela Scheet, **Nebraska**
LeRay de Chaumont Chapter, **New York**
Elizabeth C. Graham, **North Carolina**
Cynthia B. Sweeney, **Pennsylvania**
Tennessee Society, NSDAR
Larry and Mary Anderson, **Texas** *
Bronwen Maxwell, **Washington**

Gifts of \$1,500 to \$2,999.99

Sue Ellen Adams, **Alabama**
Travis Bishop, AL *
Beth Cagle, AL
Janet Ewing Deaton, AL
Athelia W. Gibbs, AL
Gunter Mountain Chapter, AL
Cheryl P. Harrison, AL
Hunt's Spring Chapter, AL
Betty D. Moore, AL *
Rainbolt Mountain Chapter, AL
Sue Shaver, AL
Hampton Smith, AL
Twickenham Town Chapter, AL
Larry Ward, AL
Shelby D. Ward, AL
Adele E. Lancaster, **California**
Karen J. Montgomery, CA
Nancy Briles, **Florida**
Ruth Ann Fay, FL

Pulaski Chapter, **Georgia**
Rebecca M. West, GA
Martha R. Zimmerman, **Illinois**
Edith H. Brunia, **Iowa**
Trust of Doris Pike White, **Maine**
Louisa St. Clair Chapter, **Michigan**
Mississippi State Society, NSDAR
Cindy J. Bell, **Nevada**
Nancy F. Hanna, **New York**
Patricia Hopper, **Tennessee**
Helen C. Moore, TN *
Merry Anne Pierson, TN
Lady Washington Chapter, **Texas**
Texas State Society, NSDAR
Ann Wager Chapter, **Virginia**
Kate Waller Barrett Chapter, VA
Judy and Joe Mays, VA
Lanabeth L. Horgen, **Washington**

Gifts of \$750 to \$1,499.99

Anne Phillips Chapter, **Alabama**
Nancy C. Billings, AL
Jean K. Brewer, AL *
Tammy B. Clemons, AL *
Margaret and David Cox, AL *
Bernadine R. Faulkner, AL
Foodland - Chris Lane Reeling in Future Pros, AL
General Sumter Chapter, AL
Grant Church of God of Prophecy, AL
Guntersville Tackle and Outdoor at Waterfront, AL
Martha Keane, AL
Linda Kuykendall, AL
Clariece B. Lilly, AL
Nickey Mason, AL *
Old Elyton Chapter, AL
Philip Owen, AL
Scott Pace, AL *
Dr. Parker Griffith Family Foundation, AL
Anne H. Parramore, AL
Amanda Pittman, AL
Princess Sehay Chapter, AL
Rita H. Reid, AL
SCS Alabama, LLC
Brandon and Rachel Stubblefield, AL *
Virginia M. and George Thacker, AL
Hollywood Chapter, **California**
Laura Horn, CA
Elizabeth L. Julian, CA
Sharon L. Maas, CA
Susan J. Montgomery, CA
Cheryl Odell, CA
Florida State Society, NSDAR
Suzanne Landry, FL
Patricia Bradford, **Georgia**
Kristy Fuell, GA
G. B. & Charlotte A. Saunders Foundation, Inc., GA
Martha Stewart Bulloch Chapter, GA
Sandy Springs Chapter, GA
Kristine Wood, **Idaho**
Estate of Marlene E. Black, **Illinois**
Janice P. Bolinger, **Indiana**

Gina M. LaCroix, **Michigan**
Sophie de Marsac Campau Chapter, MI
Stoney Creek Chapter, MI
Kelly L. VanWormer, MI
Anna M. Royston, **Mississippi**
Kathy B. Wallace, MS *
Missouri State Society, NSDAR
Francis Hopkinson Chapter, **New Jersey**
New York State Organization, NSDAR
Shatemuc Chapter, NY
Cricket C. Crigler, **North Carolina**
Dale and Wendy Brott, **Ohio**
Pennsylvania State Society, NSDAR
Fort Nashborough Chapter, **Tennessee**
Charlotte S. Reynolds, TN
Emily D. Robinson, TN
Sarah Polk Chapter, TN
Susan Rogers Thomas, TN
Lethe C. Burns, **Texas** *
Captain Molly Corbin Chapter, TX
Karla Devin, TX
John Abston Chapter, TX
Lynn F. Young, TX
Claire B. Bennett, **Virginia**
LeAnn F. Turbyfill, VA
Cascade Chapter, **Washington**
Gail Sawyer, WA

Gifts of \$250 to \$749.99

Alamance Chapter, **Alabama**
Harold D. Batie, AL
Bienville Chapter, AL
Cahawba Chapter, AL
Chief Colbert Chapter, AL
Chief Tuskaloosa Chapter, AL
Christian & Small LLP, AL
Kathy Clements, AL
Terri L. Dean, AL
Patrice R. Donnelly, AL
First State Bank, AL
Fort Mims Chapter, AL
Freedom Marine Center LLC, AL
Sims and Alicia Garrison, AL
Grant First Baptist Church, AL
Grant First Baptist Church Women's Ministry, AL
Grant Pharmacy, AL
Grant Tire & Auto Center LLC, AL
Heather W. Green, AL *
Saralee C. Green, AL
Virginia F. Houston, AL
Huntsville Chapter, AL
Grady Jacobs, AL
John Parke Custis Chapter, AL
Josiah Brunson Chapter, AL
Tammy Largin Laucik, AL *
LHT Commercial Real Estate LLC, AL
Light Horse Harry Lee Chapter, AL
Lily of the Cahaba Chapter, AL
Sally Lineberry, AL
Marilyn (Dianne) Lollar, AL
William R. Lucas, AL

*Alumni

Donor Recognition continued

Jeanie B. McNees, AL
Jane J. and V. Kenneth Michel, AL
Doris Moore, AL *
LaDania E. Norton, AL
Jan J. Owen, AL *
Charlotte M. Park, AL
Lisa Clay Pate, AL
Josh Perkins, AL *
Peter Forney Chapter, AL
Melvina P. Phillips, AL
Kathy Plexico, AL *
Janeal N. Shannon, AL
Sherry M. Spurlin, AL
Lynn H. Stein, AL
Joe Teal, AL
The Wayne and Shan Russell Charitable Foundation,
AL
Tristan De Luna Chapter, AL
Rhonda B. Van Zandt, AL
David and Amanda Weeks, AL *
Betty H. Weir, AL
Michele Williams, AL
Rincon del Diablo Chapter, **California**
Santa Margarita Chapter, CA
Captain Richard Sopris Chapter, **Colorado**
Mary Clap Wooster Chapter, **Connecticut**
Rene Bishop, **Florida**
Estero Island Chapter, FL
Barbara Extejt, FL
Lakeland Chapter, FL
Stacy Poe, FL
Kate Cook, **Georgia**
Fielding Lewis Chapter, GA
Betty Brown Harrah, GA
Mindy T. Kammeyer-Price, GA
Debbie Kyle, GA
Randi D. Minor, GA
Rebecca Ann Mullins, GA
Laura Lee Nichols, GA
Donna L. Owens, GA
Constance Rifkind, GA
Martha Ann Story, GA
Yvonne S. Boone, **Iowa**
Marla L. Suter, IA
Denise K. Bullock, **Kansas**
Colonel John Streett Chapter, **Maryland**
Dorothy Lawson, MD
Elizabeth Steward Garner, **Michigan**
Lydia Barnes Potter Chapter, MI
PJ King Steeby, MI
Margaret R. Rowser, **Minnesota**
Hic-A-Sha-Ba-Ha Chapter, **Mississippi**
Amelia K. Langford, MS
Hellen Hicks Polk, MS
Cynthia B. Suich, **Missouri**
Susan Powers-Horn, **Nevada**
Bonnie D. Poloner, **New Mexico**
William Clay, **North Carolina** *
Joan H. Kramer, NC
Ann Simpson Davis Chapter, **Ohio**
Oklahoma State Society, NSDAR
Elizabeth A. Battles, **Pennsylvania**
Donegal Witness Tree Chapter, PA
Catawba Chapter, **South Carolina**
Mari R. Noorai, SC
Dianne Breyfogle, **Tennessee**
General Jethro Sumner Chapter, TN
KBM Enterprises, Inc., TN
Mia Keller, TN *

Sally Michaud, TN
Ocoee Chapter, TN
Jean E. Sims, TN
Jessica Stubblefield, TN *
Watauga Chapter, TN
William Branch Giles Chapter, TN
Andrew Carruthers Chapter, **Texas**
Sonya Boydston, TX
Carolyn C. Duckworth, TX
Norman Dyer, TX
Geni S. Holmes, TX *
Susan H. Holt, **Utah**
Carol P. Schwenk, **Vermont**
Madelyn R. Creedon, **Virginia**
Fran H. Davis, VA
Virginia DAR
Sally E. Buckingham, **Washington**
Kathleen K. Quickstad, WA
Jacqueline A. Riddell, WA
Lynne Stallcop, WA
West Virginia State Society, NSDAR
Linda L. Maier, **Wisconsin**
Espana Chapter, **Spain**

Gifts of \$50 to \$249.99

Jodi Adamson, **Alabama**
Susan Lynn Allen, AL
Mary Ruth Andrews, AL
Atagi Chapter, AL
Regina and Wade Atchley, Jr., AL *
Kathryn W. Bailey, AL *
Ann M. Bandgren, AL
Ann C. Barnes, AL *
Sandra G. Beaver, AL
Linda Bell, AL
Samantha and Trey Bentley, AL
Birmingham Territory Chapter, AL
Judy Blackwell, AL
Melissa and Eddie Bolt, AL
William A. Bowron, Jr., AL
Martha W. Bradford, AL
Jane A. Bramall, AL
Deborah Braswell, AL
Sara B. Brooker, AL
Ashton S. Brown, AL *
Jere Brown, AL
Keith and Kristin Buchanan, AL
Doris Edwards Bush, AL
Warren B. Cain, AL
Sandy Campbell, AL *
Captain William Bibb Chapter, AL
Martha Cheney, AL
Laura Sampson Childress, AL *
Lennie Dennis Cisco, AL *
Mr. and Mrs. Charles T. Clayton, Jr., AL
Robert and Linda Click, AL *
Mr. & Mrs. P. Michael Cole, AL
Bill and Peggy Collins, AL
Jeri J. Corbitt, AL
Beth Corey, AL
Emily and Greg Curran, AL
Mr. and Mrs. Charles W. Daniel, AL
Carolyn J. Davis, AL
Harold DeArmond, AL *
Martha and John DeBuys, AL
Delta Delta Delta Birmingham Alumni Chapter, AL
Jo Ann Dennis, AL *
Tyler Dennis, AL *
Sharon J. Devine, AL
D'Iberville Chapter, AL
Teresa Dotherow, AL

Tad R. Douglas, AL
Dripping Springs Chapter, AL
Jeremy and Tabitha Dunn, AL *
Bobbie Edmonds, AL
Sharon Edmonds, AL *
Elijah Pugh Chapter, AL
Dorla Evans, AL
Janet Evans, AL
Patricia J. Ferguson, AL
Jon and Diana S. Finley, AL
First US Bank, AL
Nancy S. Folk, AL
Fort Bowyer Chapter, AL
Kay Dailey Foster, AL
Susan R. Foster, AL *
Oma M. Gaines, AL
Jessica Gautney, AL
Beth Gorey, AL
Grant Quilters, AL
Roberta Haden Greene, AL
Martha and Chip Grizzle, AL
Connie H. Grund, AL
Laura Anderson Hairrell, AL *
Gayle Hammonds, AL
Lance and Casey Handrich, AL
Susan and Jeremy Harding, AL
Roberta B. Hardman, AL
Jacque Hawkins, AL
Margie and Stephen Helton, AL *
Bill and Carey Hinds, AL
Hunter C. Hodges, AL *
Jerry Honeycutt, AL
Rosa Hooper, AL
Mary Jo Howard, AL
Teresa S. Hunter, AL *
Ron and Donna Jackson, AL *
Elizabeth Wright Jarmon, AL *
Janice A. Jennings, AL
Kimberly M. Johnson, AL *
Carmine Jordan, AL
Karol Kapustka, AL
Ralph Keller, AL *
Susie Keller, AL *
Kelley Chapel Holiness Church, AL
Paulette Kelly, AL
Joyce M. Kennamer, AL
Maureen Kennedy, AL
David Kingsbury, AL
Charles and Charlotte Kirkland, AL *
Suzy Koski, AL
Constance Ladd, AL
Tonia Martin Lalor, AL *
Rex Ledbetter, AL *
Malynda Lee, AL *
Geanine R. Lehmann, AL
Mary Lewey, AL
Michael and Sue Ellen Lucas, AL
Linda Alcott Maples, AL
Marble Valley Chapter, AL
Michael and Vonda Marchand, AL
Martha Wayles Jefferson Chapter, AL
Ann F. Martin, AL
Donie Neal Martin, AL
Jerry L. Martin, AL *
Jorene Fuell Martin, AL *
Vivian G. Mason, AL *
Mr. and Mrs. Warren C. Matthews, AL
Danny and Carolyn May, AL *
Jacob and Katie Maynard, AL *
Johanna and Marc McLelland, AL
Joella G. McManus, AL

*Alumni

Donor Recognition continued

George and Ann McMillan, AL
Kerry McWilliams, AL
Billie R. Moore, AL
Gail W. Moore, AL
Gerald and Greta Morrison, AL *
Andrea M. Moss, AL
Diane and John North, AL
Shannon S. Oakley, AL
Old Federal Road Chapter, AL
Charlene M. Pace, AL *
Nelle W. Pallme, AL
Martha Pegues, AL
Paula Pendergrass, AL *
Nicole Pendergrass, AL *
Melanie R. Pepper, AL
Keith and Tracy M. Pflaum, AL
Brenda C. Powell, AL *
Deloris S. Quattlebaum, AL
Sandra A. Rackard, AL
Kathy Rains, AL
Joy Rice, AL *
Johnny and Patty Rice, AL *
Sandra M. Robertson, AL
Kim and Bruce Rogers, AL
Laura P. Rogers, AL
John and Kellie Rutland, AL
Elizabeth Schafer, AL
Agnes O. Scherer, AL
Alice and Bob Schleusner, AL
Jessie C. Schniper, AL
Terry and Angela Scott, AL *
Wayne and Pamela Sellers, AL
Delene Shedd, AL
Ruth N. Sherrell, AL
Janice and Rex Sisk, AL *
Charles D. Smith, AL *
Cilia Smith, AL
Kim K. Smith, AL *
Patti B. Smith, AL
Rosalie M. Smith, AL
Barbara J. Snow, AL
Doris T. Sparks, AL
Jacquelin A. Spike, AL
Keith and Angie C. Stanfield, AL *
Bobby Starnes, AL *
Stephens Chapter, AL
Frances Stewart, AL
Carroll C. Strickland, AL
James and Teraca Sutphin, AL *
Mary Ann Talley, AL
Martha G. Tellefsen, AL
Martha Heflin Terry, AL
The Thompson Foundation, AL
Tidence Lane Chapter, AL
Jeff Tolleson, AL
Anna Toquero, AL
Helen Tucker, AL *
Marilyn Tucker, AL
Adelaide and Russell Vandeveld, AL
Jean W. Vaughan, AL
Erin and Aidan Wallace, AL *
Brenda F. Walls, AL *
Scott Walton, AL
Gene Warren, AL
Rick Watson, AL *
Lynn Webb, AL
Preston Whitaker, AL *
Franklin and Jeannie Williams, AL
Shirley W. Williams, AL

Leslie R. Wright, AL
Mary R. Yarbrough, AL
Michele Yarbrough, AL
Lael Marlow, **Alaska**
Frances G. Rankin, **Arkansas**
Arrowhead Valley Chapter, **California**
Chatsworth Chapter, CA
Conejo Valley Chapter, CA
Sherry Core, CA
Brenda A. Ferich, CA
Fernanda Maria Chapter, CA
Janet Giovannetti, CA
Nina Green, CA
Mona Crandell Hook, CA
Carol O. Jackson, CA
John Greenleaf Whittier Chapter, CA
Josefa Higuera Livermore Chapter, CA
Linares Chapter, CA
Major Hugh Moss Chapter, CA
Ellen and Bill O'Brien, CA
Sarah Rao, CA
Friday's Council Tree Chapter, **Colorado**
Janette M. Hole, CO
Mount Rosa Chapter, CO
Piney Creek Chapter, CO
Laurie Ramos, CO
Lucretia Shaw Chapter, **Connecticut**
Anne Irvine Savo, CT
Sally Alshouse, **Florida**
Carol Bryant-Martin, FL
Caladesi Chapter, FL
Commodore John Barry Chapter, FL
Barbara Egolf Dedeaux, FL
Katherine Egolf, FL
Carol W. Elliott, FL
Fort Cooper Chapter, FL
Arlene Froelich, FL
Jennifer Gerken, FL
Elizabeth Kreul, FL *
Debra Egolf Lane and William Lane, FL
Sheril L. Mancino, FL
Wendy Markey, FL
Judi Oglio, FL
Old Kings Highway Chapter, FL
Peace River Chapter, FL
Anne Peck, FL
Rufus Fairbanks Chapter, FL
Roberta "Bobbie" Schofield, FL
Wilma W. Scofield, FL
St. Joseph Bay Chapter, FL
Linda Stamatoff, FL
Priscilla E. Tyson, FL
Lisa Waters, FL
Susie G. Wuest, FL
Bill and Lura Amos & Giles Amos, **Georgia**
Baron DeKalb Chapter, GA
Mary S. Bennett, GA
Anita Bianconi, GA
John and Patricia Bourne, GA
Brunswick Chapter, GA
Susan L. Burroughs, GA
Chickamauga Chapter, GA
Nancy Coleman, GA
Sheila Crumrine, GA
Ginger Gidden-Weinzierl, GA
Melba Iris Harris, GA
Patricia Hein, GA
Mary Morrow Jones, GA *
Joseph Habersham Chapter, GA
Glenna S. Lancaster, GA
Sarah L. Larson, GA

Leonard and Jean Ledbetter, GA *
Liberty Hill Chapter, GA
Lynn Carol McCollum, GA
Allyson Moyer, GA
Mary R. Mullins, GA
Oglethorpe Chapter, GA
Paula H. Osborne, GA
Janet M. Pietrobono, GA
Helen R. Powell, GA
Linda Green Richardson, GA
Sergeant Newton Chapter, GA
Randall E. Tindall, GA
Tomochichi Chapter, GA
Donna Watts, GA
William Day Chapter, GA
Anan Harmon Chapter, **Illinois**
Daniel Chapman Chapter, IL
Mary M. Helfrich, IL
Illinois State Organization, NSDAR
DonNita Schorr, IL
Barb Shurtz, IL
Twenty First Star Chapter, IL
Caroline Scott Harrison Chapter, **Indiana**
Barbara Goddard, IN
William Tuffs Chapter, IN
Hannah Lee Chapter, **Iowa**
Jean Marie Cardinell Chapter, IA
Mason City Chapter, IA
Linda Roxberg, IA
Eunice Sterling Chapter, **Kansas**
Rebecca G. Kline, KS
Berea-Laurel Ridges Chapter, **Kentucky**
Susan Smith, **Louisiana**
Camille T. Wise, LA
Barbara H. Carpenter, **Maryland**
Mary Ann Ensminger, MD
Ruann N. George, MD
Great Choptank Parish Chapter, MD
Mary Digges Lee Chapter, MD
Brooks A. Morton, MD
Potomac Hundred Chapter, MD
Maureen M. Tipton, MD
Katherine W. Williamson, MD
Trust of Ida M. Neary, **Massachusetts**
Dawn Brady, **Michigan**
Shenandoah Chefalo, MI
Jean Bessac Chapter, MI
Lynn Kohler-Glowatz, MI
Sandra McPhall, MI
Sarah Treat Prudden Chapter, MI
Pamela Schweitzer, MI
Peggy King Scully, MI
Cheryl L. Stapler, MI *
Ashmead Chapter, **Mississippi**
Betsy Love Allen Chapter, MS
Bobashela Chapter, MS
Chuquatonchee Chapter, MS
Mary Sue Douglas, MS
Donna Geno, MS
James Gilliam Chapter, MS
Patricia Miller, MS
Natchez Trace Chapter, MS
Hattie Phalen, MS
Robert "Carlton" Polk, MS
Patricia Ponds, MS
Rebecca Cravat Chapter, MS
Dell D. Scoper, MS
Shadrack Rogers Chapter, MS
Anne Blackburn, **Missouri**
Mary Bess Green, MO
Morgan M. Lake, MO

*Alumni

Donor Recognition continued

Helen W. Brown, **Montana**
 Jane Lee Hamman, **MT**
 Char Ross, **MT**
 Natalie Haughawout, **Nebraska**
 Nebraska State Society, **NSDAR**
 Elizabeth H. O'Brien, **Nevada**
 Mary Butler Chapter, **New Hampshire**
 New Hampshire State Organization, **NSDAR**
 Elizabeth Snyder - Continental Chapter, **New Jersey**
 Everardus Bogardus Society, **C.A.R., NJ**
 Jo Anne Farrell, **NJ**
 Haddonfield Chapter, **NJ**
 Elizabeth Manzi, **NJ**
 Mary E. Robertson, **NJ**
 El Portal Chapter, **New Mexico**
 Stephen Watts Kearny Chapter, **NM**
 Tucumcari Chapter, **NM**
 Colonel Gilbert Potter Chapter, **New York**
 Michelle Feehan, **NY**
 Ketewamoke Chapter, **NY**
 North Riding Chapter, **NY**
 Donna Jennings Serpico, **NY**
 Isabelle Smith, **NY**
 Joan Sondergaard, **NY**
 Suffolk Chapter, **NY**
 Brunswick Town Chapter, **North Carolina**
 Denise W. Carson, **NC**
 Laura Duncan, **NC**
 General Davie Chapter, **NC**
 Joseph McDowell Chapter, **NC**
 Joseph Montfort Chapter, **NC**
 Deborah A. Marsh, **NC**
 Private John Grady Chapter, **NC**
 Robynn R. Rutledge, **NC**
 Martha L. Berg Light, **Ohio**
 Georgia Berg Voss, **OH**
 Blennerhassett Chapter, **OH**
 Sara S. Buchsieb, **OH**
 Commodore Preble Chapter, **OH**
 Mary Ann DeVold, **OH**
 Fort Industry Chapter, **OH**
 Golden Wheel Club, **OH**

James Fowler Chapter, **OH**
 Nancy C. Johnson, **OH**
 Stanley Redmond Harper Chapter, **OH**
 Franklin County Chapter, **Pennsylvania**
 General Richard Butler Chapter, **PA**
 Great Valley Chapter, **PA**
 Ann E. Harder, **PA**
 Jacob Ferree Chapter, **PA**
 Alice J. Keiner, **PA**
 Mary Jane McGuire, **PA**
 Marjorie Musil, **PA**
 Pymatuning Chapter, **PA**
 Amy Smart, **PA**
 Elizabeth A. Watkins, **PA**
 Alice Caskey, **South Carolina**
 Snow Campaign Chapter, **SC**
 Michelle McElroy, **South Dakota**
 Carolyn M. Preber, **SD**
 Andrew Bogle Chapter, **Tennessee**
 Brigadier General Richard Winn Chapter, **TN**
 Carrie Ann Bright, **TN**
 Myra H. Bryant, **TN**
 Elizabeth A. Campbell, **TN**
 Vickie Dawson, **TN**
 Wanda H. Day, **TN**
 Patricia N. Freeman, **TN**
 Kay Grott, **TN**
 Jennifer and William Hinds, **TN**
 John Nolen Chapter, **TN**
 Judge David Campbell Chapter, **TN**
 Kings Mountain Messenger Chapter, **TN**
 Josie A. McCamish, **TN ***
 Donna McWhirter, **TN ***
 Mary Pewitt, **TN**
 Sara Reuning, **TN**
 Marian F. Schmidt, **TN**
 Linda P. Sullivan, **TN**
 Tennessee Chapter, **TN**
 Sherrie Tomerlin, **TN**
 Susan W. Walker, **TN**
 Jed and Scarlet Watson, **TN**
 Zachariah Davies Chapter, **TN**
 Michelle Arnold, **Texas**
 Betty Martin Chapter, **TX**

Marynell Bryant, **TX**
 Captain John McAdams Chapter, **TX**
 Marcy Carter-Lovick, **TX**
 Brooke Diehl, **TX**
 Diane S. Doty, **TX**
 Gordon Dutile, **TX**
 Pegi K. Ivancevich, **TX**
 Barbara J. Johnson, **TX**
 Jan Kimmel, **TX**
 La Villita Chapter, **TX**
 Lost Pines Chapter, **TX**
 Major James Kerr Chapter, **TX**
 Cletis Millsap, **TX**
 Nancy Anderson Chapter, **TX**
 Ol' Shavano Chapter, **TX**
 Kelley B. Poydence, **TX**
 Ralph Ripley Chapter, **TX**
 Robert Rankin Chapter, **TX**
 Rock Wall Chapter, **TX**
 Thankful Hubbard Chapter, **TX**
 Kathryn Asay, **Utah**
 Randi Frausto, **UT**
 Green Mountain Chapter, **Vermont**
 Vermont State Society, **NSDAR**
 Clara Baker Baldwin, **Virginia**
 Lynn A. Bowers, **VA**
 Chancellor Wythe Chapter, **VA**
 Colonel Thomas Hughart Chapter, **VA**
 Cheryl DeVine-Holick, **VA**
 District V Virginia DAR
 Wilsonia W. Esteve, **VA**
 George Mason Chapter, **VA**
 Leedstown Resolutions Chapter, **VA**
 Louisa Court House Chapter, **VA**
 Newport News-Warwick Chapter, **VA**
 Susan Palmer, **VA**
 Sharla P. Rausch, **VA**
 Bianca Warner, **VA**
 Judith Hine, **Washington**
 Cynthia Johnson-Sakuma, **WA**
 Washington State Society, **NSDAR**
 Elizabeth Baker, **Wisconsin**
 Governor Nelson Dewey Chapter, **WI**
 Jeanette S. Hursman, **Wyoming**
 Wyoming State Society, **NSDAR**



HONORARIUMS

January 1, 2022, through December 31, 2022

Contributions to benefit the children of Gunter Mountain in honor of a friend or relative are listed in alphabetical order by the name of the honoree. The name of the donor follows each entry.

Michelle Abbey

Lynnette R. Faulkner

Christopher Allen

Susan Lynn Allen

Kay Alston

Nancy McSwane

Nancy Arnold

Cactus Wren Chapter

Edwina Beall

Carolyn G. Hanf

Claire Bennett

Cheryl P. Harrison

LeAnn F. Turbyfill

Kaitlyn Bennett

Gunter Mountain Chapter

Nancy Billings

Dorla Evans

Kathy Rains

Sue Shaver

Yvonne S. Boone

Rita P. Horton

Pamela Bork

Cynthia B. Sweeney

Pat Brutscher

Tucson Chapter

Sally Napier Bueno

Cynthia B. Sweeney

Beth Cagle

Baron DeKalb Chapter

Kate Cook

Gunter Mountain Chapter

Betty D. Moore

Scott Pace

Melvina P. Phillips

Larry Ward

Caleb Cushing Society

Michelle McElroy

Cascade Chapter

Washington State Society,

NSDAR

Our Chapter Members

Francis Hopkinson Chapter

Chief Colbert Chapter Officers

Jeanie B. McNees

Chief Tuskaloosa Chapter

Executive Board

Marilyn (Dianne) Lollar

Janet Clark

Sherry Core

Lisa Clay

KBM Enterprises, Inc.

Tammy B. Clemons

Gunter Mountain Chapter

Lanabeth L. Horgen

Clariece B. Lilly

Peggy Collins

Dorla Evans

Dr. Sara Cooper

Twickenham Town Chapter

Sara C. Craft

Nancy S. Folk

Cricket Crigler

Gunter Mountain Chapter

Kathleen Curzi

Tucson Chapter

DAR

Josie A. McCamish

Rebecca Davenport

Chief Tuskaloosa Chapter

Ann T. Dillon

Cynthia B. Sweeney

Patrice Donnelly

Cindy J. Bell

Gunter Mountain Chapter

Jean W. Vaughan

Tad Douglas

Sara B. Brooker

Elisha Winn Society C.A.R.

Randall E. Tindall

Susan Elrod

Dorla Evans

Dorla Evans

Cheryl P. Harrison

Kathy Rains

Marguerite Fritsch

Cynthia B. Sweeney

Mary Lou Goehring

Sergeant Newton Chapter

Our Grandchildren

Gary and Debbie McBride

Heather W. Green

Donna Geno

Lanabeth L. Horgen

Susan J. Montgomery

Priscilla E. Tyson

Linda Green

Dorla Evans

Eugene Hamm

Twickenham Town Chapter

Cheryl Harrison

Tammy B. Clemons

Suzanne Landry

Sue Shaver

Rosalie M. Smith

Martha Hartley

Kelley B. Poydence

Sue Hart

Gunter Mountain Chapter

Beth Hendrix

General James Jackson Chapter

Terri L. Hicks, MA

Birmingham Territory Chapter

Jason Hodges

Beth Cagle

Colonel William Candler

Chapter

Donna Geno

Jan Hole

Piney Creek Chapter

Susan Holt

Betty Martin Chapter

Rita P. Horton

Tammy B. Clemons

Ruann N. George

Lois Huntington

Caroline Scott Harrison Chapter

Tim Isbill

Cilia Smith

Janice Jennings

Betty H. Weir

Peggy S. Johnson

Ann F. Martin

Stephens Chapter

Larry Ward

Mary M. Jones

Mary Morrow Jones

Mindy T. Kammeyer-Price

Tammy B. Clemons

Joseph Habersham Chapter

Sergeant Newton Chapter

Cynthia B. Sweeney

Karol Kapustka

Melvina P. Phillips

KDS Administrative Staff

Rita P. Horton

KDS Executive Committee

Rita P. Horton

Gail W. Moore

Melvina P. Phillips

KDS Faculty, Staff, & Students

Patrice R. Donnelly

KDS Students

Andrea M. Moss

KDS Students and Teachers

Sue Ellen Adams

KDS Teachers and Staff

Mary Ann DeVold

Joyce M. Kennamer

Carolyn J. Davis

Laura McCrillis Kessler

Cynthia B. Sweeney

Sara Kovachich

Twickenham Town Chapter

Morgan Meyr Lake

Cynthia B. Sweeney

Judith Lavender

Chief Tuskaloosa Chapter

Victoria Lawrence

Dorla Evans

Dawn Crumly Lemongello

Cynthia B. Sweeney

Light Horse Harry Lee Chapter

Sherry M. Spurlin

Bonnie Loftus

Tucson Chapter

Dianne Lollar

Chief Tuskaloosa Chapter

Lynn Maddox

French Lick Chapter

Linda Magelan

Tucson Chapter

Cynthia Mangum

Mary Sue Douglas

Hattie Phalen

Mary Ball Chapter

Hannah Lee Chapter

Frances McCrackin

Linares Chapter

Pat McFall

Cynthia B. Sweeney

Jeanie McNees

Chief Colbert Chapter

Michigan Daughters

Gina M. LaCroix

Helen Carter Moore

Brigadier General Richard

Winn Chapter

Susan Rogers Thomas

Susan Moore

Gunter Mountain Chapter

All of my Nieces and Nephews

Rita P. Horton

Old Stage Road Society C.A.R.

Zachariah Davies Chapter

Will Pace and Henry Pace

Charlene M. Pace

Deborah Parks

Sally Michaud

Cynthia Parnell

Cynthia B. Sweeney

Merry Anne Pierson

Myra H. Bryant

Elizabeth A. Campbell

Marian F. Schmidt

Hellen Hicks Polk

Robert "Carlton" Polk

Kathy Rains

Dorla Evans

Linda Reid

Josiah Brunson Chapter

Jessie Schniper

Jeri J. Corbitt

Linda Sehrt

Cynthia B. Sweeney

John and Sue Shaver

Bill and Peggy Collins

Mary Simonds

Baron DeKalb Chapter

Allison Skipworth

Gunter Mountain Chapter

Hampton Smith

Jon and Diana S. Finley

David Kingsbury

2022 Honorariums continued

Joy Smith
Hampton Smith
Lynne Smith
Laura Duncan
Rosalie Smith
Martha Keane
Lynda Sobera
Dorla Evans
William Sommers
Twickenham Town Chapter
Beth Stewart
Birmingham Territory Chapter
Edna Stilwell
Dorla Evans
Dianne Myers Stool
Lady Washington Chapter
James Hardage Lane I Chapter
Virginia Sebastian Storage
Cynthia B. Sweeney

Sauk Trail Chapter
Janice K. Corbett
Penny Sumners
Dorla Evans
Sue Shaver
Maureen Dougherty Tipton
Colonel John Streett Chapter
Tohopeka Chapter
Roberta Haden Greene
Aydin Toquero
Anna Toquero
Bella Toquero
Anna Toquero
Peggy C. Troxell
Cynthia B. Sweeney
Mary Turner
Liberty Hill Chapter
Twickenham Town Chapter
Officers
Sue Shaver

Denise Doring VanBuren
Joan Sondergaard
Cynthia B. Sweeney
Jean W. Vaughan
Chief Tuskaloosa Chapter
Gunter Mountain Chapter
Dell D. Scoper
Shelby D. Ward
Oma M. Gaines
Becky M. West
Colonel John McIntosh Chapter
Connie Flowers
Kathryn W. West
Cynthia B. Sweeney
Pamela White
Tucson Chapter
Janet L. Whittington
Cynthia B. Sweeney

Janis Williams
Dorla Evans
Lynne Williams
Josiah Brunson Chapter
Cecile Wimberley
Carrie Ann Bright
Mrs. Norma Wolford
John Parke Custis Chapter
Pamela Rouse Wright
Cynthia B. Sweeney
Ann Yamrus
Private John Grady Chapter
Lynn Forney Young
Cynthia B. Sweeney
Zachariah Davies Chapter
Members
Zachariah Davies Chapter

MEMORIALS

January 1, 2022, through December 31, 2022

Contributions to benefit the children of Gunter Mountain in memory of a friend or relative are listed in alphabetical order by the name of the honoree. The name of the donor follows each entry.

Lois L. Alcott
Linda Alcott Maples
Martin Anderson
Gunter Mountain Chapter
Charles "Charlie" H. Ayers, Jr.
Tammy B. Clemons
Rex Ayers
Travis Bishop
Genevieve Baker
Hannah Lee Chapter
Ricky Barnes
Ann C. Barnes
Anne Batie
Harold D. Batie
Billy Bearden
Jean K. Brewer
Tammy B. Clemons
Allyson Benton
Joe Teal
Zona Bishop
Travis Bishop
Anne Riley Bourne
John and Patricia Bourne
Christine Griffith Box
Chief Colbert Chapter
E. Lynn Brackey
Sandy Springs Chapter
Twyla Brammell
Janet Ewing Deaton
Mary Brandt
Hannah Lee Chapter
Colonel Donald R. Brewer
Jean K. Brewer
Anne Peck
Bobby Ray Brown
Regina and Wade Atchley, Jr.

Louise K. Cambron
Brenda C. Powell
Janice and Rex Sisk
Dot Campbell
Jean K. Brewer
Merle Chewning
Michael and Vonda Marchand
Gregory M. Clay
Lisa Clay Pate
Andrew Cooper Clayton
Cynthia Cleveland McNamara
Mary Ann Clendenin
DonNita Schorr
Nannie B. Campbell Click
Robert and Linda Click
Barbara Gunter Cockrum
Michelle Arnold
Gail Boles
Marynell Bryant
Linda Bynum
Jan Kimmel
Cletis Millsap
Virginia Harless Cook
Twickenham Town Chapter
Dorothy Cooley
Snow Campaign Chapter
Reta I. and Maxwell K. Crandell
Mona Crandell Hook
Sally Jo Wright Denny
Kathryn W. Bailey
Theresa Nickerson Donnelly
Michelle McElroy
Janeal N. Shannon
Karen Owen Downs
Philip Owen
Jed and Scarlet Watson
Julia Dutile
Gordon Dutile

Dr. Charles H. Edmonds, Sr.
Bobbie Edmonds
Sharon Edmonds
Nettie M. Edwards Elliott
Doris Edwards Bush
Patricia Camp Faulkner
Todd Abele
Bill and Lura Amos & Giles Amos
Philippa Bainbridge
Charlton and Missy Barger
Samantha and Trey Bentley
Ed Bethea
William A. Bowron, Jr.
Martha W. Bradford
Jere Brown
Mark Caraway
Martha Cheney
Christian & Small LLP
Mr. and Mrs. Charles T. Clayton, Jr.
Mr. & Mrs. P. Michael Cole
Beth Corey
Emily and Greg Curran
Mr. and Mrs. Charles W. Daniel
Martha and John DeBuys
Delta Delta Delta Birmingham
Alumni Chapter
Thomas and Mary Dunbar
Faulkner Family Foundation
Irene and Huey Gardner
Sims and Alicia Garrison
Martha and Chip Grizzle
Melissa and Cobb Hagan
Bill and Carey Hinds
Jennifer and William Hinds
Rosa Hooper
Mr. and Mrs. Cory Jackson
Carmine Jordan
Adelaide Kendrick

Constance Ladd
Leigh Anne and Charles Lambert
Sally Lineberry
Michael and Sue Ellen Lucas
Donie Neal Martin
Mr. and Mrs. Warren C. Matthews
George and Ann McMillan
Jane H. Morgan
Diane and John North
Bob and Carla Reich
Kim and Bruce Rogers
Alice and Bob Schleusner
Wayne and Pamela Sellers
The Thompson Foundation -
Mike and Genie Thompson
Adelaide and Russell Vandeveld
Scott Walton
Gene Warren
Philip Watts
Henry and Elizabeth Weatherly
Lynn Webb
Dootsie Williams
Virgil W. Faulkner
Lynnette R. Faulkner
Helen Franke
Caravel Chapter
Greg Fuell
William Clay
Margaret and David Cox
Kristy Fuell
Christine Fultz
Scott Pace
Eugenia Futrell
Snow Campaign Chapter
Len Gibbs
Athelia W. Gibbs
Shirley Goff
Akansa Chapter

2022 Memorials continued

Daniel Brent Gray
Akansa Chapter

Carol Green
Saralee C. Green

Ewell Green
Saralee C. Green

Joy Green
Susan Lynn Allen

Robert Green
Saralee C. Green

Helen Hahn
Chief Tuskaloosa Chapter
Nancy S. Folk
Rita P. Horton
Billie R. Moore

Leslie Andrée Hanna
Nancy F. Hanna

Sharon Fanning Harbin
Melissa and Eddie Bolt
Hatherine Bouldin
Keith and Kristin Buchanan
Susan and Jeremy Harding
Brooke and Kenny Hill
Kerry McWilliams
Gina Pitt
John and Kellie Rutland
Mary Ann Talley
Hollie Thompson
Jeff Tolleson
Franklin and Jeannie Williams
Telah Wrenn

David Harden
Susan Smith

J.T. Hardin
Harold DeArmond

Linda Clark Harding
Ann C. Barnes
Gerald and Greta Morrison

Jerry Harrison
Joe Teal

Lanetta Mae Heflin
Martha Heflin Terry

Daniel Helton
Ashton S. Brown
Margaret and David Cox
Jo Ann Dennis
Tyler Dennis
Brooke Diehl
Jeremy and Tabitha Dunn
Laura Anderson Hairrell
Lance and Casey Handrich
Margie and Stephen Helton
Hunter C. Hodges
Mia Keller
Ralph Keller
Jorene Fuell Martin
Kim K. Smith
Keith and Angie Stanfield
Jessica Stubblefield
Martha G. Tellefsen

Nola and Huey Henry
Harold DeArmond

Mary-Jane Earle Hensley
Barbara H. Carpenter

Maxine Hobbs
Mission Canyon Chapter

Adelia J. Hornbuckle
Patricia Hopper

Gloria Bailey Hunt
DAR of Michigan

Charlotte T. Jackson
Roberta B. Hardman

Linda Sartain Johnson
Jan J. Owen

Robert Kapustka
Karol Kapustka

Lillian Keel
Linda Bell

Gail Keller
Gunter Mountain Chapter

Ronald N. Kelly
Paulette Kelly

Margaret Bassham King
Terri L. Dean

Margaret Ann Kirkland
Jean K. Brewer
Scott Pace

Vera and Newman Kirkland
Charles and Charlotte Kirkland

Dot Mosley Klepac
Old Federal Road Chapter

Charlotte Langford
Snow Campaign Chapter

Shirley McPeters Largen
Tammy Largen Laucik

James Leonard Ledbetter, Jr.
Leonard and Jean Ledbetter

Olene Ledbetter, KDS Class of 1940
Rex Ledbetter

Carol LeMarbe
Lydia Barnes Potter Chapter

Major and Mrs. Winfield Lippincott
Dorothy W. Lippincott

Helen Lopez
Gunter Mountain Chapter
Cheryl P. Harrison
Rita P. Horton
Kimberly M. Johnson

Polly T. Lucas
William R. Lucas
Donna Watts

Laurie Luther
Shatemuc Chapter

Charles "Sonny" Martin
Jerry L. Martin

Madison Martin
Melvina P. Phillips

Kristin Hicks Masterski
Sherrie Tomerlin

Patsy McCall
Old Federal Road Chapter

Fleta McConachie
DonNita Schorr

Charlotte Cammack McEachin
Charlotte M. Park

Margaret "Margie" McKinley
First US Bank, Beverly Dozier

Ted Mellen
Sam Houston Chapter

Bette G. Millhon
Golden Wheel Club

Jasper Lee Morrow
Gunter Mountain Chapter

Barbara Myrick
Cahawba Chapter

Barbara Clawson Oliver
Jessie C. Schniper

Phil Owen
Philip Owen
Jed and Scarlet Watson

Ruth Carpenter Owen
Philip Owen

Mary Grace Pearson
Sandra A. Rackard

Sheila Pendergrass
Rita P. Horton

Pansy Virginia Peoples
Josiah Brunson Chapter

Judith Phillips
Harry and Elaine Cagle
Marilyn Crites
Tristan De Luna Chapter

Lisa Pietrzk
Sandra McPhall

Avis Porch
Terry and Angela Scott

Anna C. Porter
Jeanie P. Hornung

Connie Gamble Randles
Kelley Chapel Holiness Church
Ross Randles

Jan Neal Rice
Dr. Parker Griffith
Family Foundation

Ladye Kathryn Roberts
Hellen Hicks Polk

Johnnie Lou Robertson
Jacqueline Barker

Leigh Schniper
Jessie C. Schniper

Clenon and Tim Shedd
Delene Shedd

Kathryn W. Sieverts
Mary Ann Ensminger

Shelia Edmonds Simpson
Ann C. Barnes
Gerald and Greta Morrison

Dorothy Byrum Sipes
Pamela Scheet
Tommy and Patty Sipes

Helen and Earnest Smith
Charles and Charlotte Kirkland

Linda Smith
Beth Cagle

Lauren M. Snellgrove
Hunt's Spring Chapter

Patrick Spearnock
Kathy Clements

R.V. Stapler
Cheryl L. Stapler

Ginger Horton Szabo-Durham
Johanna and Marc McLelland
Laura P. Rogers

Scott Bankston Talbott
Deborah Talbott

Gerald Tucker
Josiah Brunson Chapter

Virginia Walkup
Catawba Chapter

Martha Louise Reynolds Watt
Mary Pewitt

Charlotte Whitaker
Kings Mountain Messenger
Chapter

Frederica G. White
Nelle W. Pallme
Dell D. Scoper

Betty Wilhelm
Sally Alshouse

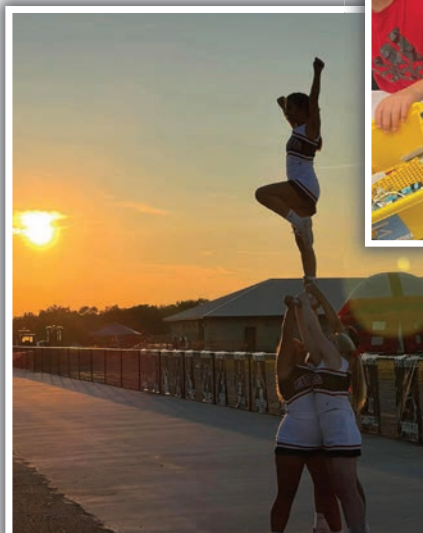
Leah Thompson Wion
Kristal Wion Eckhardt

Merry Ann T. Wright
Cynthia B. Sweeney

V.O. Wright
Kathryn W. Bailey

Jane Hicks York
Patricia N. Freeman

Donald D. Zimmerman
Martha R. Zimmerman





Kate Duncan Smith DAR School
6077 Main Street
Grant, Alabama 35747

Save the Date

Dedication Day 2023

October 12 and 13